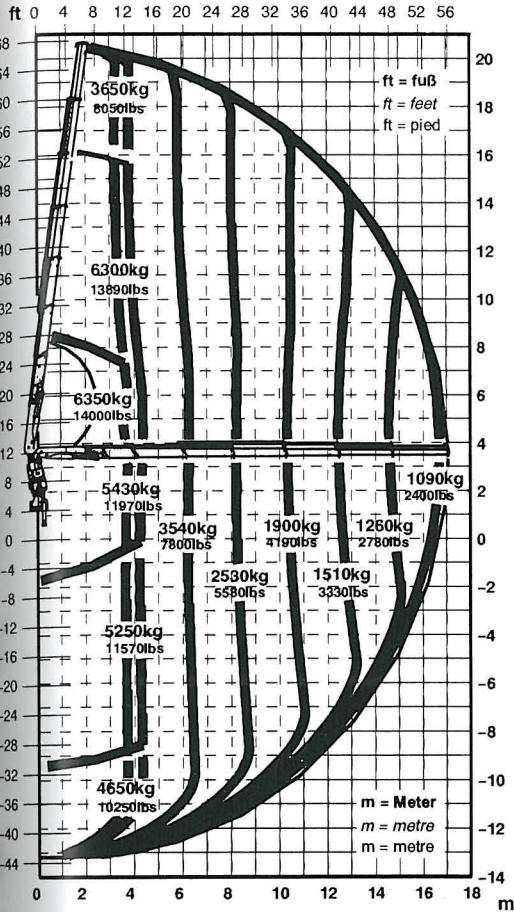


# PK 27000 E

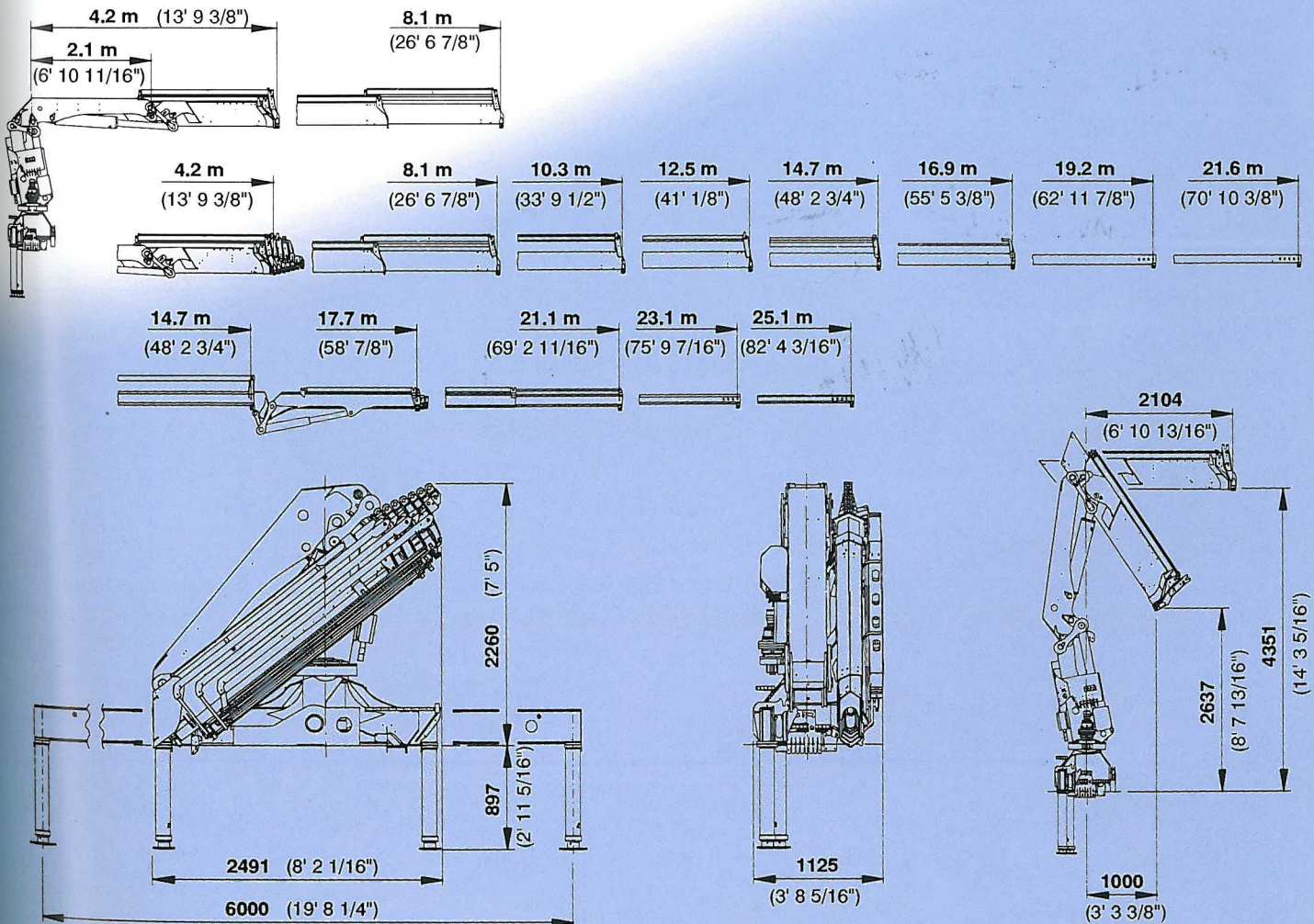


# PK 27000

The PK 27000 presents itself at the highest technical level. As standard this crane features a 'load sensing' and a 'HPLS'-system as well as a radio remote control.

The load sensing system improves the ease of operating and control, it increases the operating performance and lowers handling costs.

The load sensing system is fed by a 75 cm<sup>3</sup> variable displacement pump which automatically supplies the crane with the required quantity of oil at the pressure required for each working cycle. As soon as a crane movement has been actuated via the radio remote control, the pump capacity is increased automatically and continuously. By this method the truck's engine is spared, fuel is saved and unnecessary heating up of oil is prevented.



## Technical specifications (DIN 15018 H1-B3):

## PK 27000

Max. lifting moment	191670 ft.lbs	260 kNm/26.5 mt
Max. lifting capacity at 20° main boom position	18080 lbs / (8200 kg)	at 9' 10" 3.0 m
Max. hydraulic outreach		55' 5" 16.9 m
Maximum outreach (with fly jib)		82' 4" 25.1 m
Slewing angle		continuous

## Standard crane:

Slewing torque	20975 ft.lbs	28.4 kNm/2.9 mt
Outreach		26' 7" 8.1 m
Stabilizer spread	standard	19' 8" 6.0 m
	maximum	19' 8" 6.0 m
Fitting space required		3' 8" 1.1 m
Width folded		8' 3" 2.5 m
Operating pressure (psi)		4860 psi 335 bar
Recommended pump capacity	12 US.gal./min. 10 imp.gal./min	45 l/min
Dead weight (without mounting parts, pump and oil)		6130 lbs 2780 kg

## Max. lifting capacities:

Outreach	Capacity
<b>hydraulic PK 27000 A</b>	
3.0 m 8200 kg	9' 10" 18080 lbs
4.1 m 6330 kg	13' 6" 13955 lbs
6.0 m 4280 kg	19' 9" 9435 lbs
7.9 m 3210 kg	26' 7080 lbs
<b>hydraulic PK 27000 B</b>	
3.0 m 8000 kg	9' 10" 17640 lbs
4.1 m 6070 kg	13' 6" 13380 lbs
6.0 m 4050 kg	19' 9" 8930 lbs
8.0 m 3000 kg	26' 4" 6615 lbs
10.1 m 2360 kg	33' 2" 5205 lbs
<b>hydraulic PK 27000 C</b>	
3.2 m 7400 kg	10' 6" 16315 lbs
4.2 m 5830 kg	13' 10" 12855 lbs
6.1 m 3860 kg	20' 1" 8510 lbs
8.1 m 2820 kg	26' 7" 6220 lbs
10.2 m 2180 kg	33' 6" 4805 lbs
12.3 m 1790 kg	40' 4" 3945 lbs

Outreach	Capacity
<b>manual</b>	
14.4 m 1430 kg	47' 3" 3150 lbs
16.6 m 1180 kg	54' 6" 2600 lbs
18.9 m 770 kg	62' 0" 1700 lbs
21.2 m 480 kg	69' 7" 1060 lbs
<b>hydraulic PK 27000 D</b>	
3.7 m 6500 kg	12' 2" 14330 lbs
4.3 m 5620 kg	14' 2" 12390 lbs
6.2 m 3680 kg	20' 5" 8115 lbs
8.2 m 2660 kg	26' 11" 5865 lbs
10.2 m 2030 kg	33' 6" 4475 lbs
12.4 m 1630 kg	40' 8" 3595 lbs
14.5 m 1380 kg	47' 7" 3040 lbs
<b>manual</b>	
16.7 m 1120 kg	54' 10" 2470 lbs
19.0 m 770 kg	62' 4" 1700 lbs
21.3 m 480 kg	69' 11" 1060 lbs

Outreach	Capacity
<b>hydraulic PK 27000 E</b>	
3.7 m 6350 kg	12' 2" 1400 lbs
4.4 m 5430 kg	14' 6" 11970 lbs
6.3 m 3540 kg	20' 9" 7805 lbs
8.2 m 2530 kg	26' 11" 5580 lbs
10.3 m 1900 kg	33' 10" 4190 lbs
12.5 m 1510 kg	41' 3330 lbs
14.6 m 1260 kg	47' 11" 2780 lbs
16.8 m 1090 kg	55' 2" 2405 lbs
<b>manual</b>	
19.0 m 770 kg	62' 4" 1700 lbs
21.3 m 480 kg	69' 11" 1060 lbs

The reaches are indicated for a 20° main boom position and are therefore not the maximum ones.



Made by PALFINGER

Internet: <http://www.palfinger.com>

We reserve the right to change design and specification without prior notice. 12/97